

Fiber Access Terminal Box (FATB)

Description



FATB-16A



FATB-16B



FATB-12A



FATB-12B



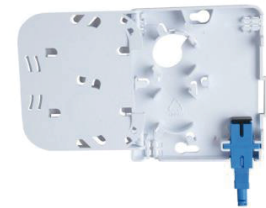
FATB-8A



FATB-8B



FATB-6A



FATB-6B

Ordering Information

Model	Size:L*W*H(mm)	Max Capacity	PLC Splitters	Adaptors	Color/Material
FATB-16A	292*218*83	Splice 24 Fibers	2x1:8 Steel Tube Type	16pcs SC/UPC or SC/APC	Light Grey/Black/PC+ABS
			2x1:8 LGX Cassette Type	/	
FATB-16B	290*265*90	Splice 24 Fibers	2x1:8 Steel Tube Type	16pcs SC/UPC or SC/APC	Light Grey/Black/PC+ABS
			2x1:8 LGX Cassette Type	/	
FATB-12A	235*200*62	Splice 20 Fibers	1x1:8 Steel Tube Type	12pcs SC/UPC or SC/APC	Light Grey/PC+ABS
FATB-12B	250*190*72	Splice 20 Fibers	1x1:8 Steel Tube Type	12pcs SC/UPC or SC/APC	Light Grey/PC+ABS
		Splice 8 Fibers	1x1:8 LGX Cassette Type	/	
FATB-8A	245*203*69	Splice 8 Fibers	1x1:8 Steel Tube Type	8 pcs SC/UPC or SC/APC	Light Grey/PC+ABS
FATB-8A	245*203*69	Splice 8 Fibers	1x1:8 Steel Tube Type	8 pcs SC/UPC or SC/APC	White/PC+ABS
FATB-6B	186*116*41	Splice 8 Fibers	1x1:4 Steel Tube Type	6 pcs SC/UPC or SC/APC	Light Grey/PC+ABS
FATB-6A	186*116*41	Splice 8 Fibers	1x1:4 Steel Tube Type	6 pcs SC/UPC or SC/APC	Light Grey/PC+ABS