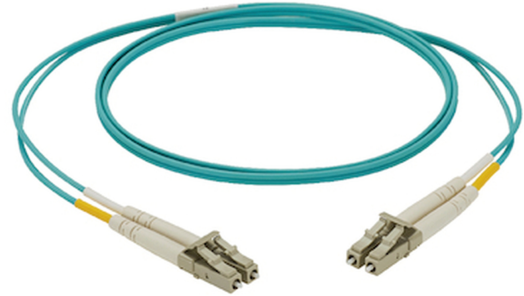


Fiber Optic Simplex/Duplex Patch Cord

Features

- High-quality ferrules
- Bend-insensitive fibers
- 100% tested assemblies
- Low insertion loss, high return loss
- Stable optical properties
- Good exchangeability and durability



Fiber optic patch cords are suited for communication equipment, cross connects and work area connections. All patch cords are 100% factory tested to ensure performance. LC, SC, FC, ST Patch Cords are available in both multi mode (62.5/125 μ m and 50/125 μ m) and single mode cable-types, in duplex and simplex versions.

Profiber's patch cords provide high reliability and flexibility in different application. All patch cords can be customized in cable length, color and connector types to suit every customer requirement with our advanced technology and production facilities.

Parameter

Mechanical data	Value
Connector Type	LC/SC/FC/ST
Polarity Type	A to B, A to A
Cable Diameter	0.9mm, 2.0mm, 3.0mm
Cable Jacket Color	Yellow, Orange, Aqua, Violet and OEM colors

Optical data	Value	
Fiber Mode	OS1/OS2/G657-9/125 bend insensitive(A.1 or A.2) or OM1/2/3/4/5	
Test Wavelength	1310nm/1550nm (Singlemode), 850nm/1300nm (Multimode)	
Insertion Loss	Low Loss	Singlemode \leq 0.10dB, Multimode \leq 0.10dB
	Standard Loss	Singlemode \leq 0.30dB, Multimode \leq 0.30dB
Return Loss		Singlemode UPC \geq 55dB APC \geq 65dB
		Multimode UPC \geq 25dB

Environmental Data

Description	Value
Operating Temperature	-20°C to +60°C
Store Temperature	-20°C to +60°C
Fully Compliant	IEC-61754, TIA/EIA-604, GR326, RoHS

Ordering Information

-	X	X	X	X	X	X	X	X	X	XXX
Type	Connector	Polish	Connector	Polish	Fiber Mode	Insertion Loss	Polarity	Cable Diameter	Jacket	Length
FOSPC	1=LC/Simplex	1=UPC	1=LC/Simplex	1=UPC	1=OS1	1=Low loss	1=A - A	1=0.9mm	1=LSZH	001=001m
FODPC	2=SC/Simplex	2=APC	2=SC/Simplex	2=APC	2=OS2	2=Standard loss	2=A - B	2=2.0mm	2=PVC	...
	3=FC/Simplex		3=FC/Simplex		3=G657A1			3=3.0mm	3=OFNR	999=999m
	4=ST/Simplex		4=ST/Simplex		4=G657A2				4=OFNP	
	5=LC/Duplex		5=LC/Duplex		5=OM1					
	6=SC/Duplex		6=SC/Duplex		6=OM2					
					7=OM3					
					8=OM4					
					9=OM5					

Note: APC only for single mode.

Example:

FODPC 526222231003 Means : Duplex, LC/APC -SC/APC, OS2, Standard Loss, Polarity AB, OD 3.0mm, LSZH, 003 m